

# MHR

## Mix Head Repair & Sales

*Serving the USA, Mexico & Canada Since 1989*

### Mix Heads by MHR

*Tri-Tilt, Straight & Custom Designs*

### Mix Head Repair

*Servicing All Mix Head Manufacturers*

### Chemical Pumps

*from Rotary Power*

### Pump Repair & Service

*by Rexroth Trained Staff*

### Magnetic Drive Couplers

*from DST - Eliminate Leakage*



### OUR MISSION

To do business in a morally Christian way which is pleasing to God. To abide by the laws of the land and to establish a long term mutually beneficial business relationship with all MHR customers and vendors.



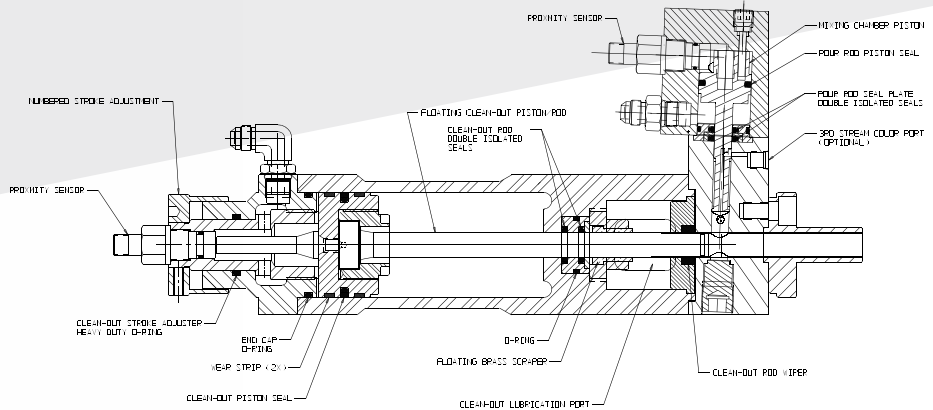
MHR-INC.com | (616) 394-0191



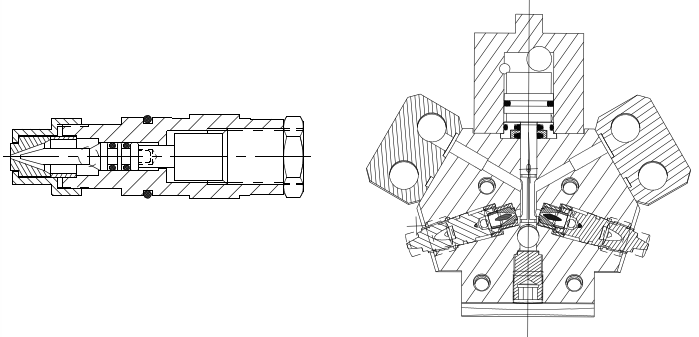
# Tri-Tilt Mix Head

Impingement Mix Heads for Abrasive & Non-Abrasive Applications

MHR's Patented Tri-Tilt Mix Heads achieve superior mix results through *non-linear non-coplanar impingement*



MHR  
ORIFICE ASSEMBLY  
MH6110  
SCALE: 2:1



The MHR Tri-Tilt Mixing Process eliminates air bubbles – drastically improving the laminar flow & the quality of your finished product.

## AVAILABLE SIZES

**8/12 | 10/14 | 12/18 | 16/25**

MODEL	SIZE/IN			WT lb.	MINIMUM THROUGH PUT		MAXIMUM THROUGH PUT				ADJ. STROKE MAX % CLOSE OFF
	A	B	C		OPEN & CLOSED MOLD		OPEN MOLD LAMINAR FLOW		CLOSED MOLD		
					1:1 RATIO	2:1 RATIO	1:1 RATIO	2:1 RATIO	1:1 RATIO	2:1 RATIO	
MHR TT 8/12	6.13	5.62	14.88	19	60 g/s	90 g/s	340 g/s	255 g/s	420 g/s	315 g/s	60%
MHR TT 10/14	6.91	7.48	16.85	35	100 g/s	135 g/s	460 g/s	345 g/s	1000 g/s	750 g/s	60%
MHR TT 12/18	7.29	7.71	19.03	44	160 g/s	240 g/s	760 g/s	570 g/s	2000 g/s	1500 g/s	60%
MHR TT 16/25	8.62	7.71	21.80	80	245 g/s	360 g/s	1460 g/s	1115 g/s	2270 g/s	1690 g/s	60%



# Straight Mix Heads

*for Abrasive and Non-Abrasive Applications*

**Multiple size options available to fit your application**

MHR has produced straight heads as large as 40 MM

Our straight mix head is designed and built to the same stringent standards as our patented Tri-Tilt heads—for customers seeking a more traditional solution.

## CUSTOM HEADS & HEAD DESIGN



**Have a special project or complicated configuration?**  
MHR has the know-how to engineer, design, and build custom solutions for your specific needs.

**LET US QUOTE YOUR NEXT PROJECT**



### MHR MIX HEAD STANDARD FEATURES

- Triple shaft seal and scraper bushing on clean-out rod \*
- Long-wearing clean-out and pour rods
- Adjustable clean-out stroke for better mix control \*
- PTFE, VITON and other seal materials compatible with MPI, TDI, and corrosive blowing agents
- 2 \* proximity switches – PNP 3-wired D.C. current, normally open
- Orifice sizes: 0.5 MM through 4.2 MM. Your specific sizes supplied with mix head
- Chemical and hydraulic ports: SAE straight thread 'O' ring fittings with JCI 37° flared ends.
- Clean-out hydraulics separated from chemicals with one piece cylinder extension with windows
- Third stream color port (optional) for dosing system or recirculation system \*
- MHR Mix Heads can be customized to meet your requirements including custom seals

\* Features exclusive to Patented Tri-Tilt Mix Heads

# Mix Head Service & Repair

All repairs at MHR are done by competent personnel with nearly 100 years of combined mix head repair and polyurethane processing experience.

## SERVICING ALL MIX HEADS & CHEMICAL VALVES

KONAL	CANNON
KRAUSS MAFFEI	DUT
FRIMO	ADMIRAL
OMS	LINDEN

AND MANY MORE!

Ask About Our

# 3 DAY

Mix Head Repair Program

## NEW PUMPS



C01  
C04  
C07  
C20



## PUMP REPAIR

**Rexroth**  
Bosch Group

- New Seals
- New OEM Parts
- Fully Cleaned
- Fully Tested
- Prepared for any ISO or POLY job by our Rexroth Factory Trained experts

## MAGNETIC DRIVE COUPLERS



Eliminate Pump Shaft Seals  
**NO MORE CHEMICAL LEAKAGE**

## OTHER PARTS & ACCESSORIES

VSE Flow Meters | Pump Seal Kits | Custom Chemical Valves | Balluff Prox Switches  
PNF Proximity Switches | Orifice Bodies | Orifices | Needles | Custom Seals

Give Us A Call  
or  
Visit Us Online

(616) 394-0191  
MHR-INC.com  
78 Veterans Drive  
Holland, Michigan 49423

